

## OUTDOOR BRACKETS



Outdoor Bracket -  
Single Phase



Outdoor Bracket -  
Three Phase

| Item No. | Description  | Specification                   | M.O.Q |
|----------|--|---------------------------------|-------|
| RGB10/1  | Outdoor Mounting Bracket - 1PH outlet              | 950mm x 40mm sq                 | 1     |
| RGB10/2  | Outdoor Mounting Bracket - 3PH outlet              | 950mm x 40mm sq                 | 1     |
| RGB10/3  | Outdoor Mounting Bracket - 1PH outlet              | 450mm x 40mm sq<br>w/base plate | 1     |
| RGB10/4  | Outdoor Mounting Bracket - 3PH outlet              | 450mm x 40mm sq<br>w/base plate | 1     |
| RGB10/10 | Outdoor Mounting Bracket<br>Isolator for 56 series | 300mm x 40mm sq<br>w/base bar   | 1     |
| RGB10/11 | Outdoor Mounting Bracket - 1PH outlet              | 300mm x 40mm sq<br>w/base bar   | 1     |
| RGB10/C  | Outdoor Mounting Bracket                           | Custom                          | 1     |

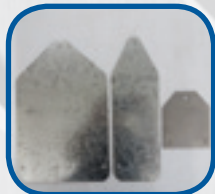
## PEDESTAL POSTS



Outlet

| Item No.  | Description  | Specification  | M.O.Q |
|-----------|--|--|-------|
| RGB10/12  | Accepts 1x56 series outlet &<br>switch hot dipped galv | 100mm x 100mm x 500mm sq post 125mm x<br>125mm base mounting plate | 1     |
| RGB10/12C | Accepts 1x56 series outlet &<br>switch hot dipped galv | Custom Sizing  | 1     |
| RGB10/13  | Accepts 2x56 series outlet &<br>switch hot dipped galv | 100mm x 100mm x 500mm sq post 125mm x<br>125mm base mounting plate | 1     |
| RGB10/13C | Accepts 2x56 series outlet &<br>switch hot dipped galv | Custom Sizing  | 1     |
| RGB10/C   | Pedestal Post  | Custom   | 1     |

## PENDANT BRACKETS



Single & Three Phase  
Pendant Mounting  
Brackets

| Item No. | Description              | Specification    | M.O.Q |
|----------|--------------------------|------------------|-------|
| RGB10/5  | Pendant Mounting Bracket | 3PH Single o/let | 5     |
| RGB10/6  | Pendant Mounting Bracket | 3PH Double o/let | 5     |
| RGB10/7  | Pendant Mounting Bracket | 3PH Triple o/let | 5     |
| RGB10/8  | Pendant Mounting Bracket | 1PH Double o/let | 5     |
| RGB10/9  | Pendant Mounting Bracket | 3PH Switch only  | 5     |
| RGB10/C  | Pendant Brackets         | Custom           | 1     |